

Project Name: Upper Burton Creek Storm Sewer

CIP Project: N/A

Location: Burton Creek Watershed - Storm Sewer replacement from Homestead to Dodge along Texas Avenue and continues to Coulter through side streets (Burnett)

Council District: 1,3,4
Type / Source: Storm Water / MP 2003

CIP Ranking: 48
Projected Cost Year: 2022
Projected Cost: \$2,899,000
Original Cost Year: 2009

Status: Unfunded

Description

This section of the City of Bryan was platted between 1910 and 1920. The general direction of drainage is to the south towards the upper section of Burton creek. The entire drainage area consists of 52.2 acres. The storm sewer replacement shall extend from Homestead to Dodge along S. Texas Avenue. The storm sewer then extends along Burnett Street to the discharge into Burton Creek near S. Coulter Drive.

Justification

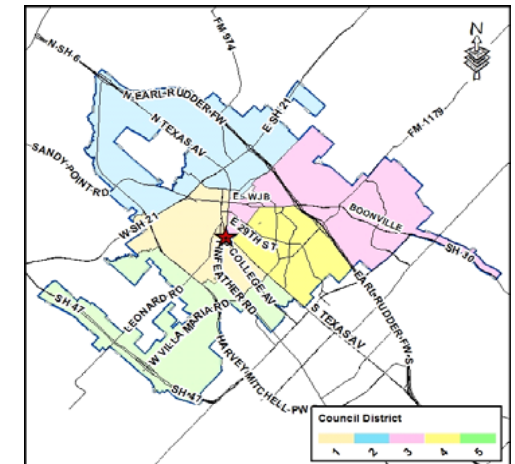
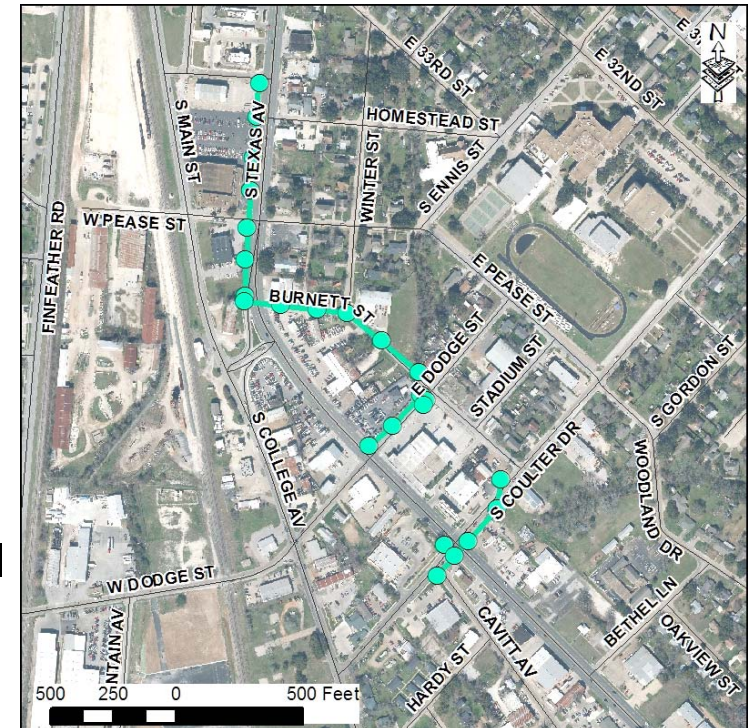
The storm sewer is undersized based upon the ultimate development in the neighborhood. The City of Bryan has received numerous complaints about storm sewer flooding at the intersection of S. Texas Avenue and S. Coulter Avenue.

Funding

Type	Original	Source	2018	2019	2020	2021	2022
General	\$290,000	Bonds	\$0	\$0	\$0	\$0	\$483,000
Design/Survey	\$290,000		\$0	\$0	\$0	\$0	\$483,000
Drainage	\$1,200,000	Bonds	\$0	\$0	\$0	\$0	\$1,999,000
Street	\$250,000	Bonds	\$0	\$0	\$0	\$0	\$417,000
Const/ROW	\$1,450,000		\$0	\$0	\$0	\$0	\$2,416,000
Total	\$1,740,000		\$0	\$0	\$0	\$0	\$2,899,000

Funding Source Summary

Source	Original	2018	2019	2020	2021	2022
Bonds	\$1,740,000	\$0	\$0	\$0	\$0	\$2,899,000
Total	\$1,740,000	\$0	\$0	\$0	\$0	\$2,899,000





Capital Improvement Program
Project: SW_09_046



