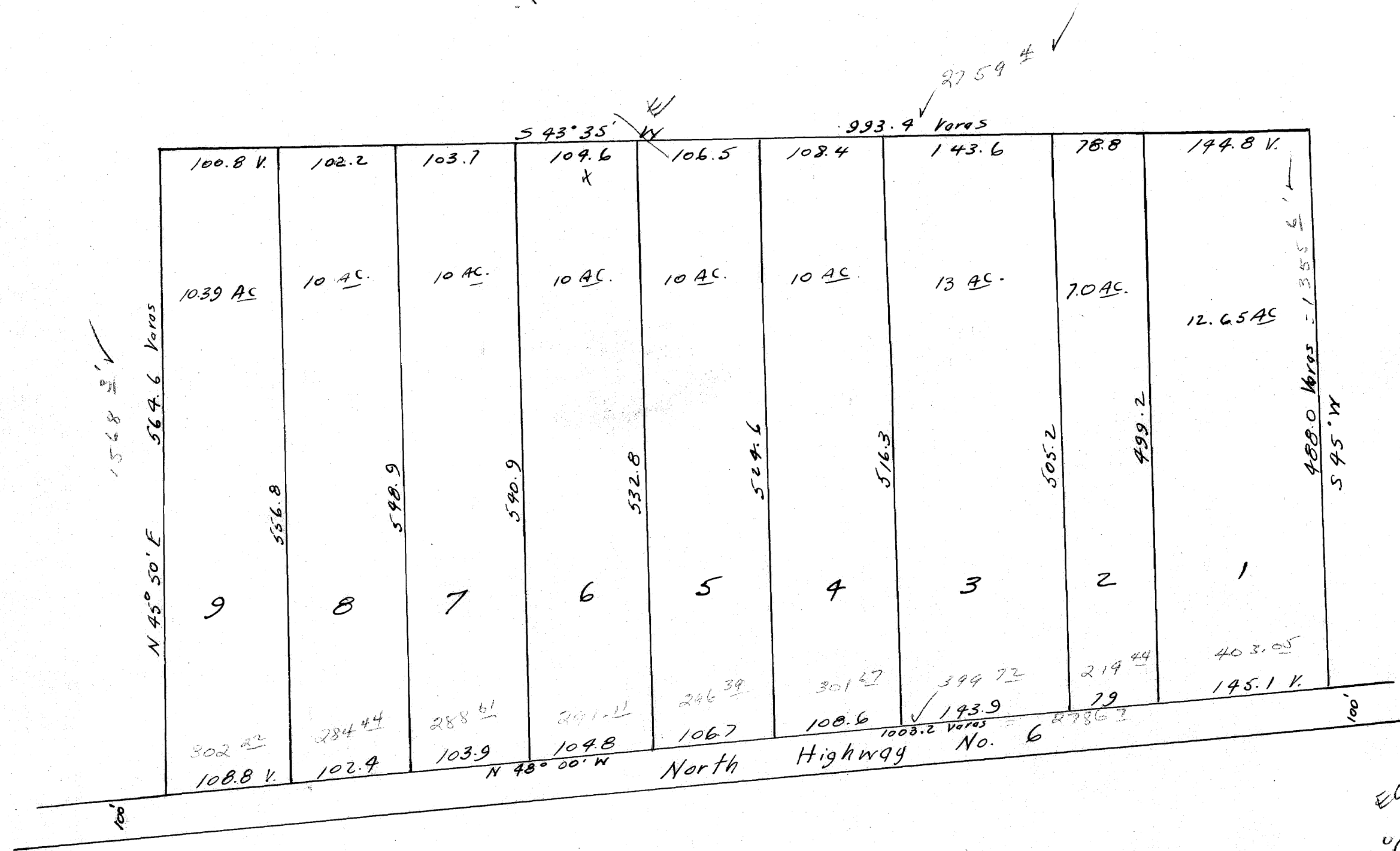
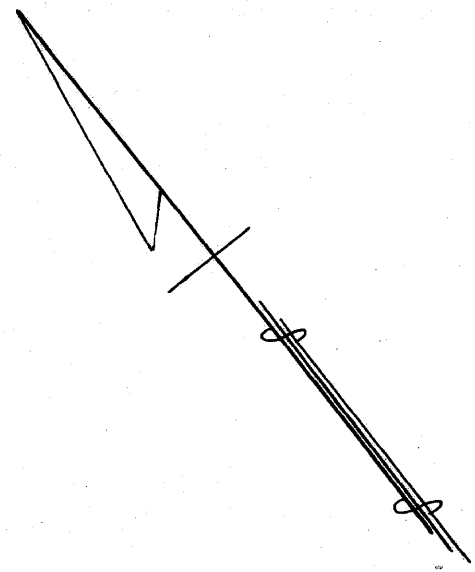


SALADINER SUBDIVISION

of Part of 157.6 Acres of land
in Moses Baine League
Brazos County, Texas

Surveyed By Evans Moady,
Co. Surveyor, Grimes Co., Texas
April 25, 1946
D. R. 125 Page 61



Scale: 1" = 100 Varas = 277.77 ft.

on base
42 7/8 in

EOC
N 89° 41' 20" E ~ 2.04 = 1/4150 3/4