

SIEGERT SUBDIVISION

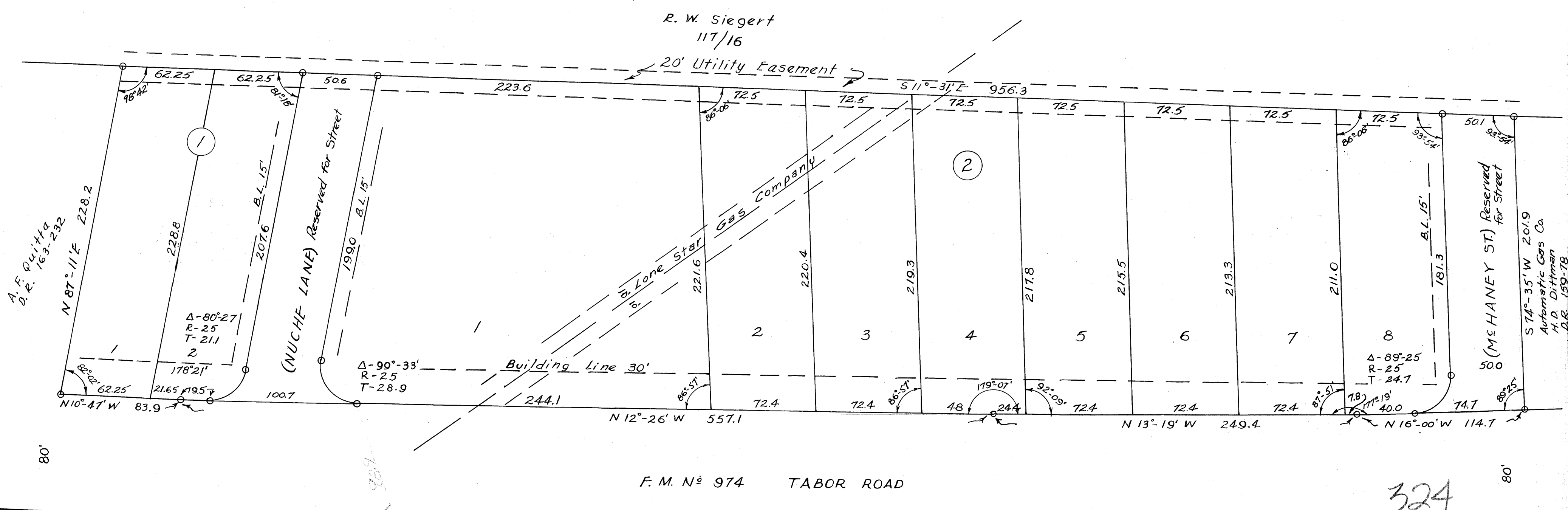
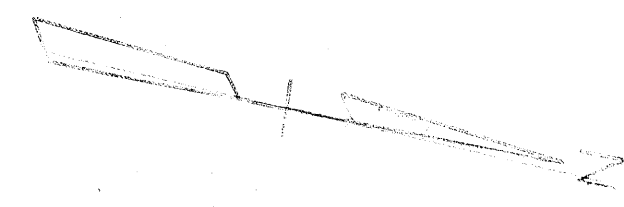
PORTION OF A 79 AC. TRACT IN SFA No 10

SCALE: 1" = 50'

OCTOBER, 1956

D.R.: VOL. 180, PG. 390

FILED FEB. 28, 1957



on base
of
stake

o Denotes Corners set in concrete.
All other Corners marked with iron stakes

STRATTA SUBD.

D/R 149/310

324