

# M. AND G.W. STOVALL'S ADDITION

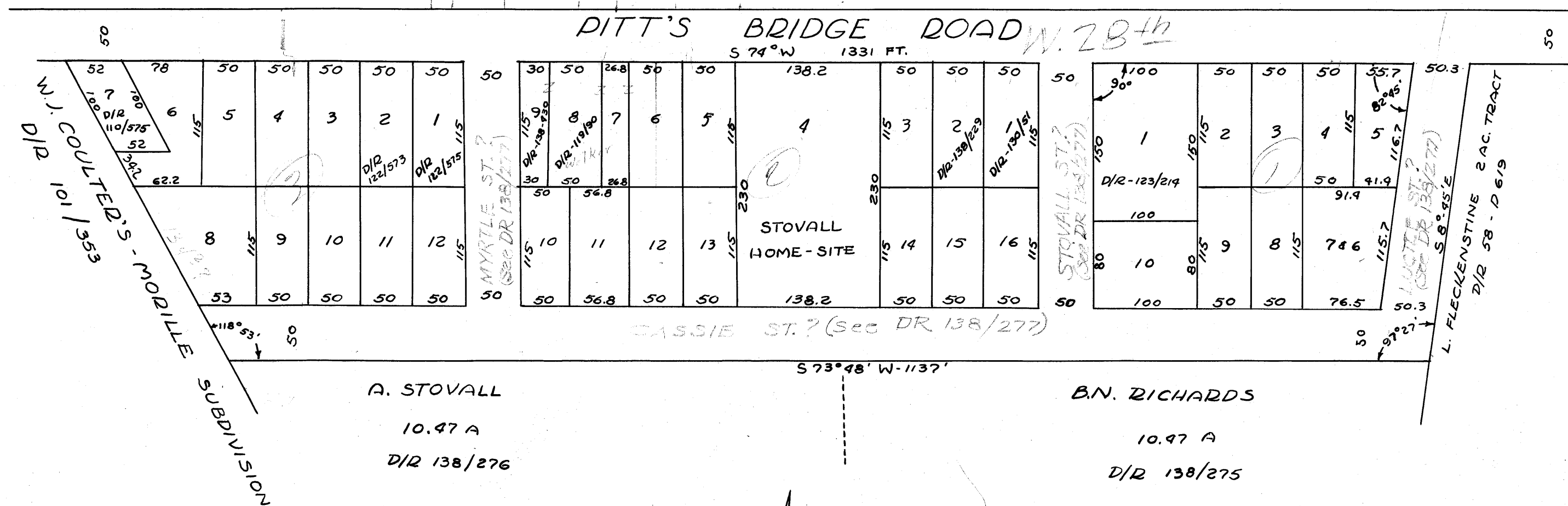
A SUBDIVISION OF APPROXIMATELY 7.5 ACRES IN  
S.F. AUSTIN LEAGUE #9, BRAZOS CO. TEX.  
Abstract No. 62

SCALE 1"=100'

~~NOT RECORDED~~

D.R.: VOL. 185, PG. 529  
NOV. 15, 1957

C. A. BARTHALOW, SURVEYOR



337

138/277 is street r/w's  
portion of pt. of 27 acres

NOT RECORDED