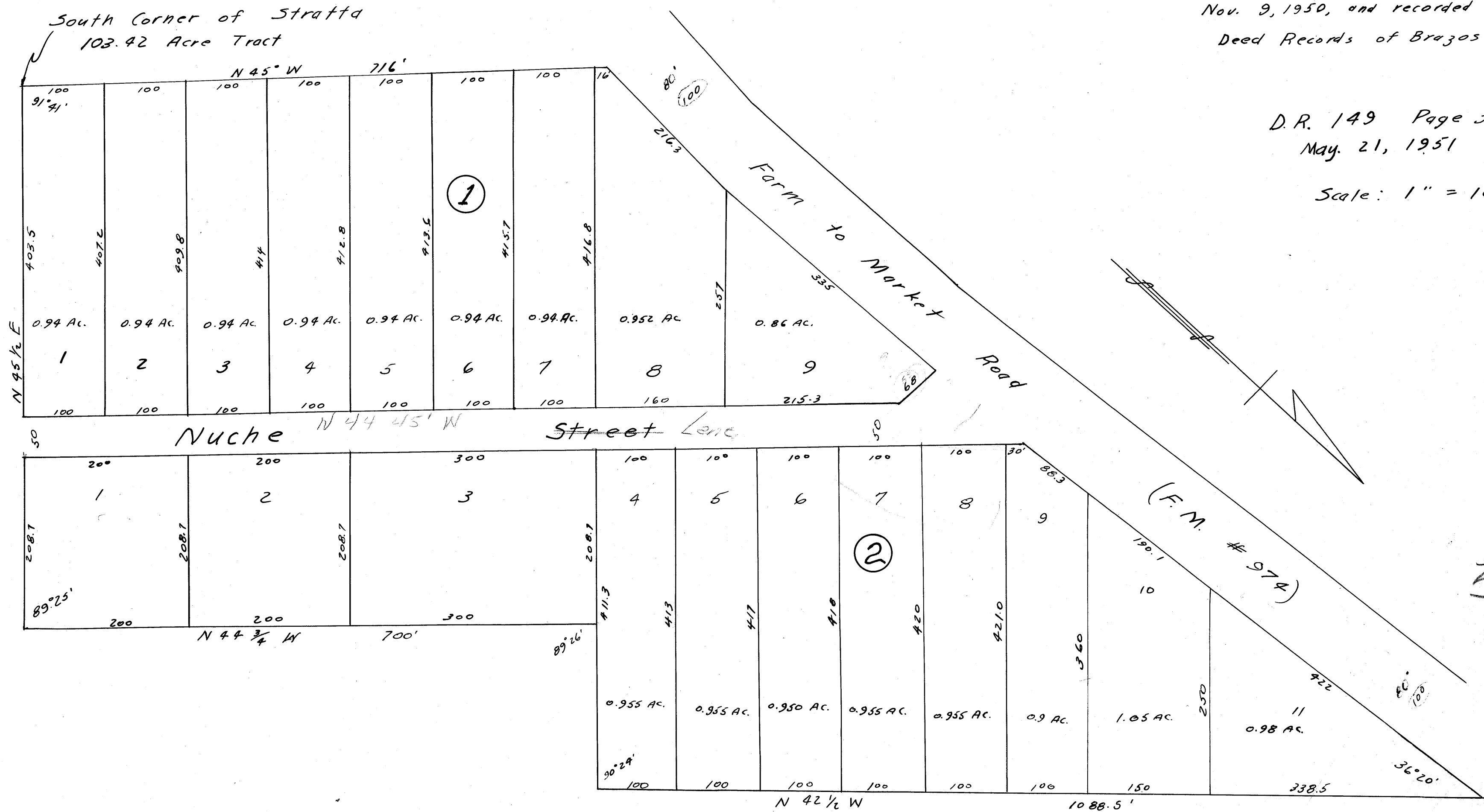


STRATTA SUBDIVISION

of a 20 Acre tract out of the S.F.A. #10
and being a portion of a tract of
103.42 Acres conveyed to Charlie Stratta
by Lee Deleo, et al; by deed dated
Nov. 9, 1950, and recorded in Vol. 147, Page 292
Deed Records of Brazos Co., Texas

D.R. 149 Page 319
May. 21, 1951

Scale: 1" = 100'



see book on 4/16/53