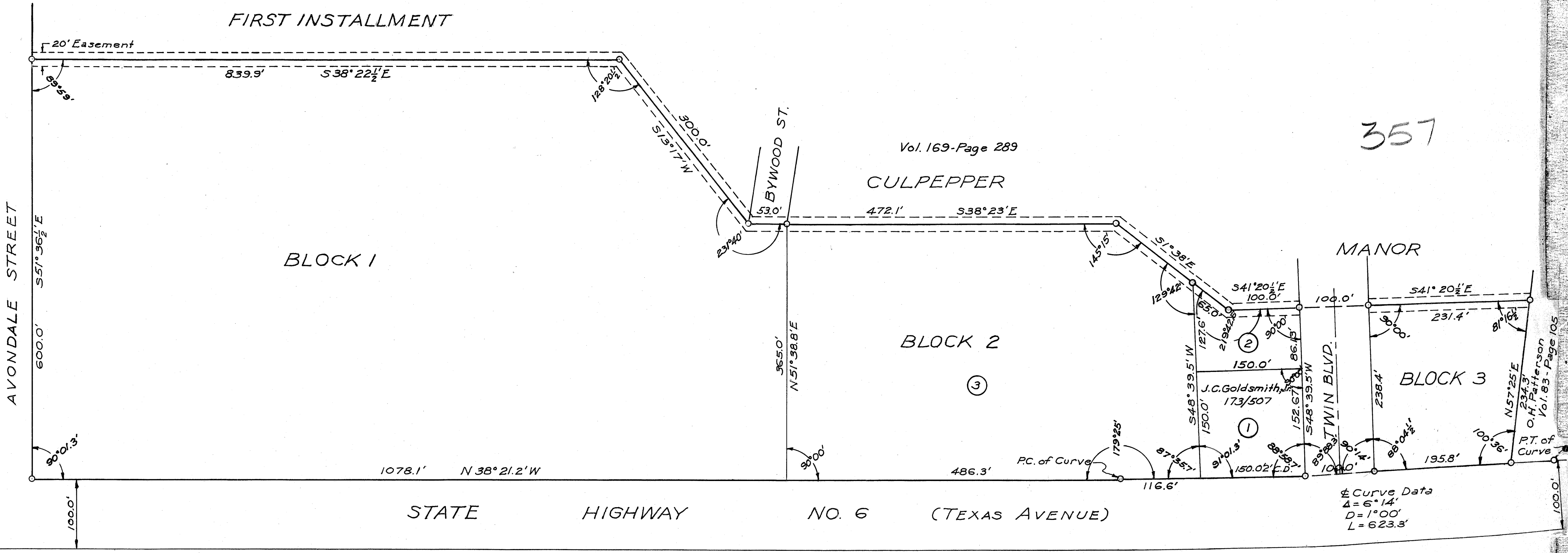


TOWNSHIP  
BRYAN, TEXAS  
SCALE: 1" = 100'  
D.R.: VOL. 187, PG. 585  
MARCH 5, 1958

on basis of 100' setback

FIRST INSTALLMENT



Vol. 169-Page 289

CULPEPPER

357

MANOR

BLOCK 1

BLOCK 2

BLOCK 3

STATE HIGHWAY NO. 6 (TEXAS AVENUE)

J.C. Goldsmith  
173/507

Curve Data  
Δ = 6° 14'  
D = 1° 00'  
L = 623.3'

O.H. Patterson  
Vol. 83-Page 105