

Elmo Weedon Road Closure

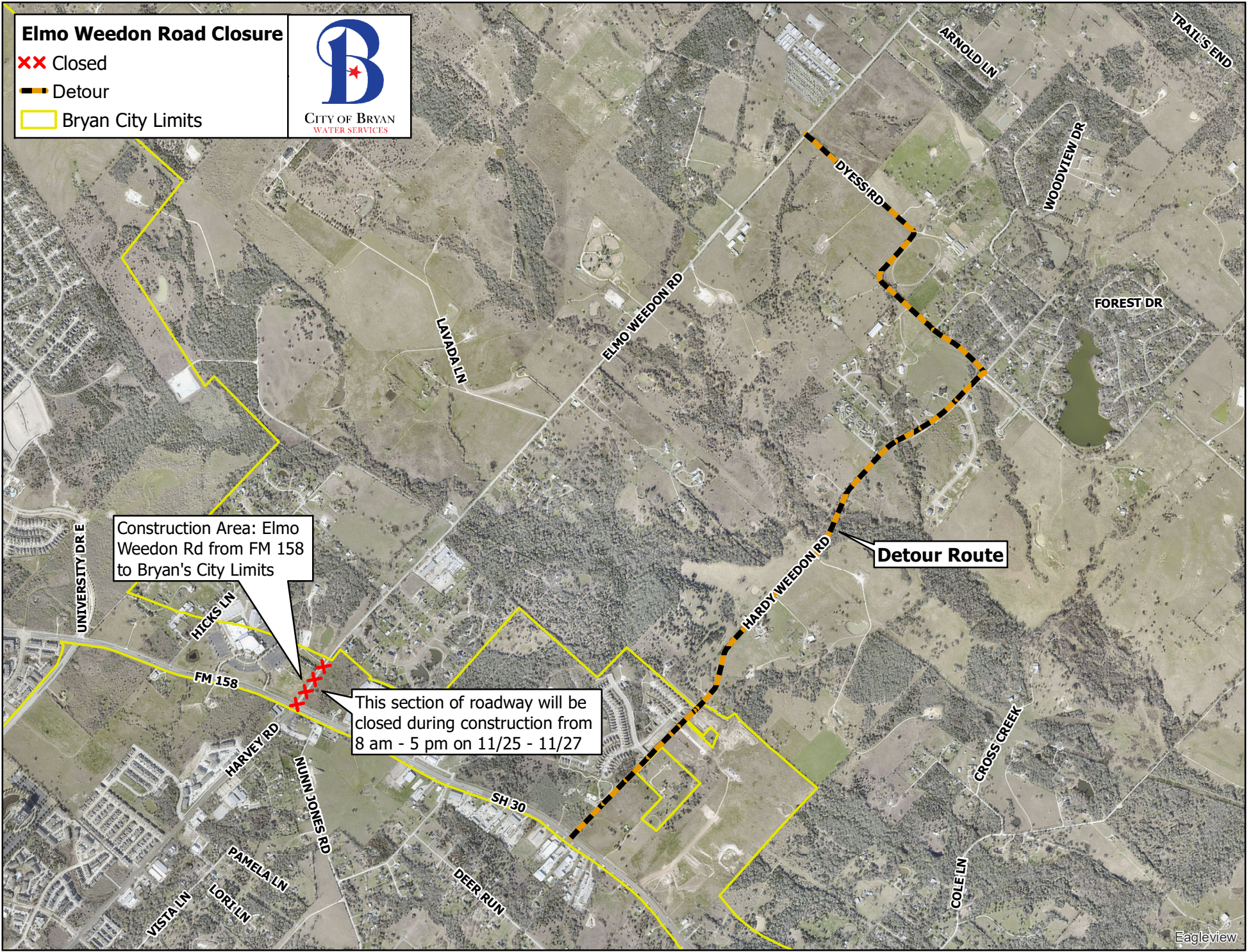
XX Closed

Detour

Bryan City Limits



CITY OF BRYAN
WATER SERVICES



Construction Area: Elmo Weedon Rd from FM 158 to Bryan's City Limits

This section of roadway will be closed during construction from 8 am - 5 pm on 11/25 - 11/27

Detour Route